

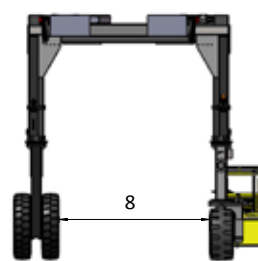
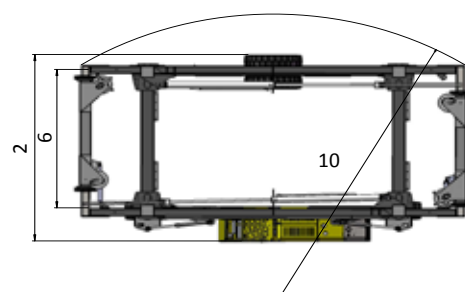
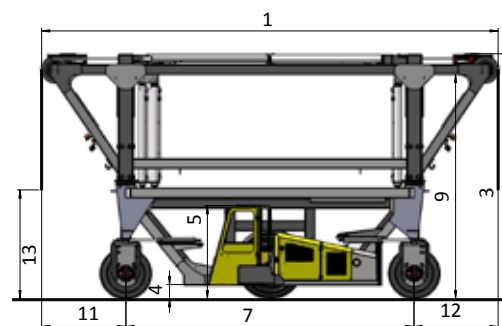


# SPECIFICATIONS

# COMBi-SC

Patent Pending- International Application No. PCT/EP2010/051971

REF	DESCRIPTION	Metric		Imperial	
		SC3 Trailer to Ground	SC3T Telescopic 2 High Option	SC3 Trailer to Ground	SC3T Telescopic 2 High Option
1	Overall Length	9148mm		360"	
2	Overall Width	4800mm		189"	
3	Overall Height	5165mm	4925mm - 6725mm	203"	194" - 265"
4	Ground Clearance Under Cab	275mm		11"	
5	Height Over Cab	2300mm		91"	
6	Track Front	3703mm		146"	
7	Wheelbase	5775mm		227"	
8	Width Load Area	3000mm		118"	
9	Height Load Area	4600mm	4360mm - 6160mm	181"	172" - 243"
10	Minimum Outside Radius	5250 mm		285"	
11	Overhang Front	1686mm		66"	
12	Overhang Back	1686mm		66"	
13	Lift Stroke	2200mm		87"	
A	Capacity	35,000kg		77,000lbs	
B	Unladen Weight	16,950kg	19,200kg	37,370lbs	42,330lbs
C	Gradeability	5%			
D	Maximum Ground Speed	8 km/h		5 mph	
E	Kubota 3.8 Litre Diesel	73kW		96hp	
F	Electric's	12 Volt			
G	Tyres	4 x Super Elastic Tyres			
H	Standard Colour	Yellow & Grey			
I	Suspension Seat	KAB Model 116			



Distributed by:

- 35 Tonnes / 77,000lbs Lift Capacity
- 2-Wheel Hydrostatic Drive
- 2-Wheel Steer
- Capable Of Travelling Fully Loaded
- Front And Rear Independent Sideshift For Easy Twistlock Alignment

[www.COMBiLiFT.com](http://www.COMBiLiFT.com) | [INFO@COMBiLiFT.com](mailto:INFO@COMBiLiFT.com)

**COMBiLiFT HQ:** Co. Monaghan, Ireland Tel: + 353 47 80500 Fax: + 353 47 80501

**COMBiLiFT USA:** 303 Concord Street, Greensboro, NC 27406 Tel: 1877 266 2456

**COMBiLiFT UK:** 07870 976 758

**COMBiLiFT AUSTRALIA:** 1300 552 422

**COMBiLiFT GERMANY:** 0800 000 5764



# COMBiLiFT

CUSTOMISED HANDLING SOLUTIONS

## COMBi-SC

### Combilift Straddle Carrier



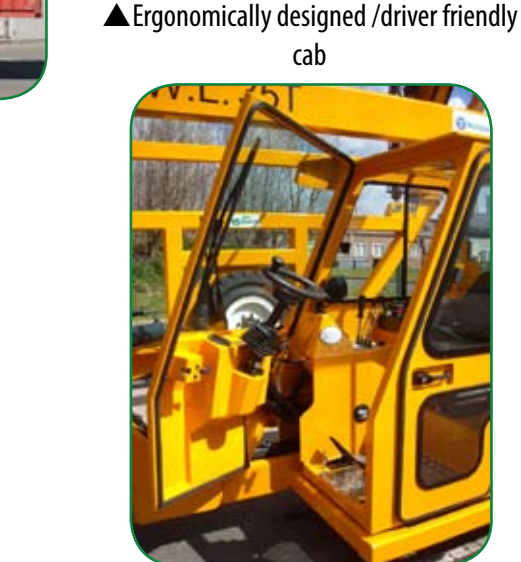
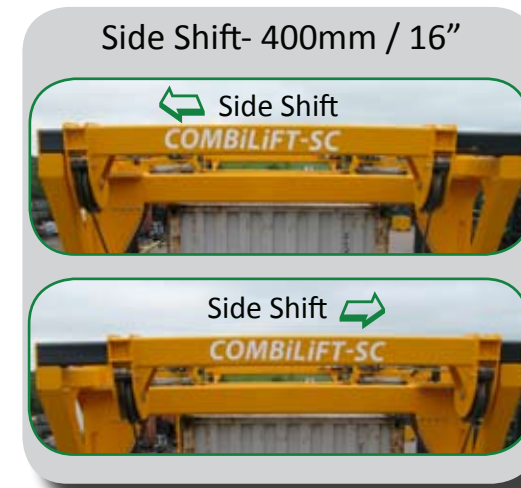
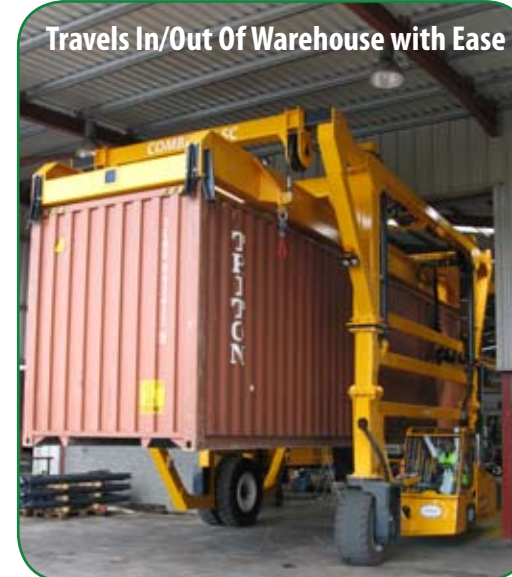
The Cost Effective Solution For Handling Containers And Oversized Loads







- 2 Minute Off-Loading From Trailer To Ground
- Excellent 360° Visibility From Driver Position
- Eliminates Trailers Waiting To Be Loaded And Unloaded
- Safer Stuffing / Destuffing At Ground Level



- Low Ground Pressure When Fully Loaded
- More Economical To Run Versus Reach Stackers
- Reduced Operating Costs
- Reduced Energy Consumption
- Lighter Weight Versus Reach Stackers
- Narrow Aisles For Maximum Storage
- Rough Terrain & Ramp Friendly
- Works On Compacted Stone, Bitumen And Light Concrete
- Exceptional 3-Wheel Manoeuvrability Circle
- No Brake Maintenance
- Improves Productivity



◀ Same Unit can lift 20', 30', 40', 45' Containers

Travels In/Out Of Warehouse with Ease

▲ Large Tyres for Low Ground Pressure

▲ Ergonomically designed /driver friendly cab

▲ Option: Front Opening cab

- Optional Features:
- Overall Dimensions Can Be Customised To Handle Non-Iso Containers
  - Customised Attachments Available For Various Loads
  - Stack 2 High/ 3 High
  - Automatic Container Spreader
  - Air Conditioning
  - Weighing System
  - 2 Speed Drive
  - 3 Wheel Drive





# DiRECTIONS



## Customised Handling Solutions

Specialist manufacturer Combilift first made its name in the materials handling sector with its innovative 4-way forklifts. It has continued to develop solutions for handling and transporting a wide variety of loads across numerous industry sectors. In this newsletter we focus on the Combilift straddle carrier (SC).

## Powerful solution for Andresen Towers

A joint Irish Danish collaboration has solved the logistical problems of handling and transporting oversized steel sections which form the basis of a revolutionary type of wind turbine tower developed by Andresen Towers.

The company's shell towers enable the construction of much higher wind turbines which generate a larger output and in turn reduce costs. Having patented the bolted shell tower design and set up 25,000m<sup>2</sup> of new production and warehouse facilities, CEO Tom Andresen was faced with the challenge of efficient, safe and cost effective handling of the 14m long, 3.3m wide tower elements, a full load of which can weigh up to 30t.



Options such as mobile cranes, counterbalance forklifts or reach stackers were discounted as Tom did not want to invest in equipment that could only

carry out one specific job. He was also focused on the total cost of ownership, which is becoming more of an issue than just the initial investment.

Consultation with Combilift identified a Combi-SC as the best solution for each of Andresen's two sites. As well as the SC's versatility, its very low axle weight results in greatly reduced ground pressure compared to other machines capable of handling similar loads, cutting out the need for expensive surface reinforcement. Each SC was adapted to take into account the varying loads on site, one model being built with a larger frame to cope with double stacked containers. The SC's dimensions and its 3-wheel manoeuvrability enable it to access the production area to pick up crates of shells, and load onto HGV's without the need for a crane.

Tom Andresen sums up "Our calculations based on a ten year operating lifetime included initial

capital outlay, fuel consumption, service costs and the reduction in wear and tear on the surfaces and proved that we could achieve major operational savings compared to using any other type of equipment. One of our major goals was to offer a competitive price, and key to this was always going to be better logistics, transportation and storage. By combining our expertise with that of Combilift we have achieved all we set out to, within an impressively short time frame."



# State of independence

Replacing standard forklifts and cranes with a Combi-SC has given the Elliott Group much more operational independence when moving the company's finished modules and loading them for despatch. Additional benefits are substantial savings on the costs of crane hire, reduced risk of product damage and enhanced health and safety procedures.

Elliott is part of the Algeco Scotsman Group which operates in 31 countries around the world supplying single and multi storey modular buildings. Combilift designed a bespoke SC for the company's largest UK manufacturing site in the North East of England based on its very specific requirements. Module sizes range from 7 to 14m in length and those which incorporate features such as kitchens or staircases have off centred loads. A series of three point adjustment bars have been fitted to the beam, offering 166 possible anchoring positions, ensuring the stable lifting and transportation of all modules.

The distance between the stacked modules has been substantially reduced as the SC's frame and wheels are positioned either side of the load. The frame has been designed to be raised to varying heights and enables modules to be double stacked. This is an improvement on the previous bulk storage methods in terms of space utilisation and also makes retrieving specific units quicker.



During periods of windy weather when it was not safe to use the cranes Elliott had to interrupt loading operations which delayed delivery schedules and meant that the company was paying for

machinery to stand idle. The dependable operation of the SC whatever the weather has allowed a more streamlined and cost effective operation for improved customer service.

## More space, less time

Handling girders and prefabricated steel structures from 12m to 23m in length, and unloading complete delivery trucks in just ten minutes is all in a day's work for Caunton Engineering's SC. The structural steelwork fabricator handles over 25,000 tonnes of steel a year so streamlined logistics are a crucial element of the company's operation.

Aisle widths between stacked products are now just 1m, compared to the 3.5m previously needed, and the extra on site capacity this brings makes it much easier for Caunton to deal with any delays in customers' projects without impacting on their own production schedules. It also allows Caunton to buy in large quantities when the price of steel is advantageous.

### Combi-SC

- 35 tonne capacity
- Diesel or LPG power options
- 2-wheel hydrostatic drive
- Load sensing steering
- Super elastic tyres
- Low level operator cab with excellent visibility

