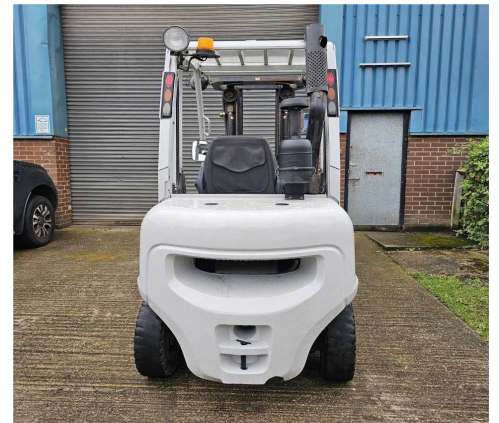


F0646 - 3.0 Ton Diesel Counterbalance Forklift



Make	Nissan	Hyd Lever Type	Mechanical (Multi) Lever
Model	YG1D2A30Q	Hyd Functions	3 incl. Sideshift
Type	Diesel Counterbalance	Lift Height (MM)	4300 mm Triplex
Capacity (KG)	3000 KG @ 500 mm LC	Closed Height (MM)	2175
Year	2013	Free Lift (MM)	1080
Hours	3,400	Engine	Nissan QD32
Attachment(s)	Hook On Sideshifter	Tank Capacity	66 Litres

This Nissan YG1D2A30Q is a 3000kg diesel powered counterbalance forklift truck fitted with a container spec 4300mm full free lift triple mast, load backrest, and hook on sideshift attachment. This truck also has 3rd hydraulics as standard for lift/lower, tilt and sideshift functions, and runs on the extremely robust Nissan QD32 engine for high reliability. **This machine has been fully painted and refurbished to an excellent finish via our workshop and dedicated forklift spray booth.**

£12,350.00 + VAT

Standard Warranty: 30 Days Parts and Labour

Please note: the above detailed equipment shall be fully serviced and hold a new Thorough Examinations Certificate prior to being delivered.

Interested? For more information contact CAM Fork Lift Trucks on the details below:

Phone: 0114 243 3332 **Email:** sales@camforklifts.co.uk